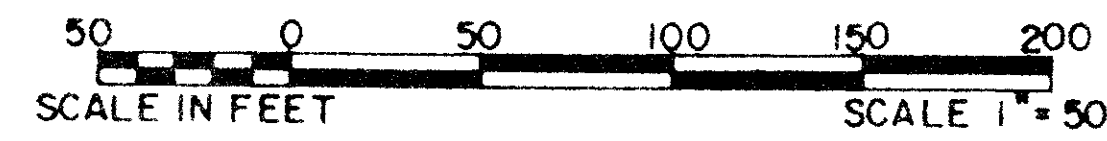


# RECREATION AREAS AT JONATHAN'S LANDING P.U.D.

IN PART OF SECTIONS 6 AND 7, TOWNSHIP 41 SOUTH, RANGE 43 EAST  
PALM BEACH COUNTY, FLORIDA  
IN NINE SHEETS SHEET NO. 6

GEE & JENSON  
ENGINEERS - ARCHITECTS - PLANNERS, INC.  
WEST PALM BEACH, FLORIDA  
NOVEMBER 1986



176

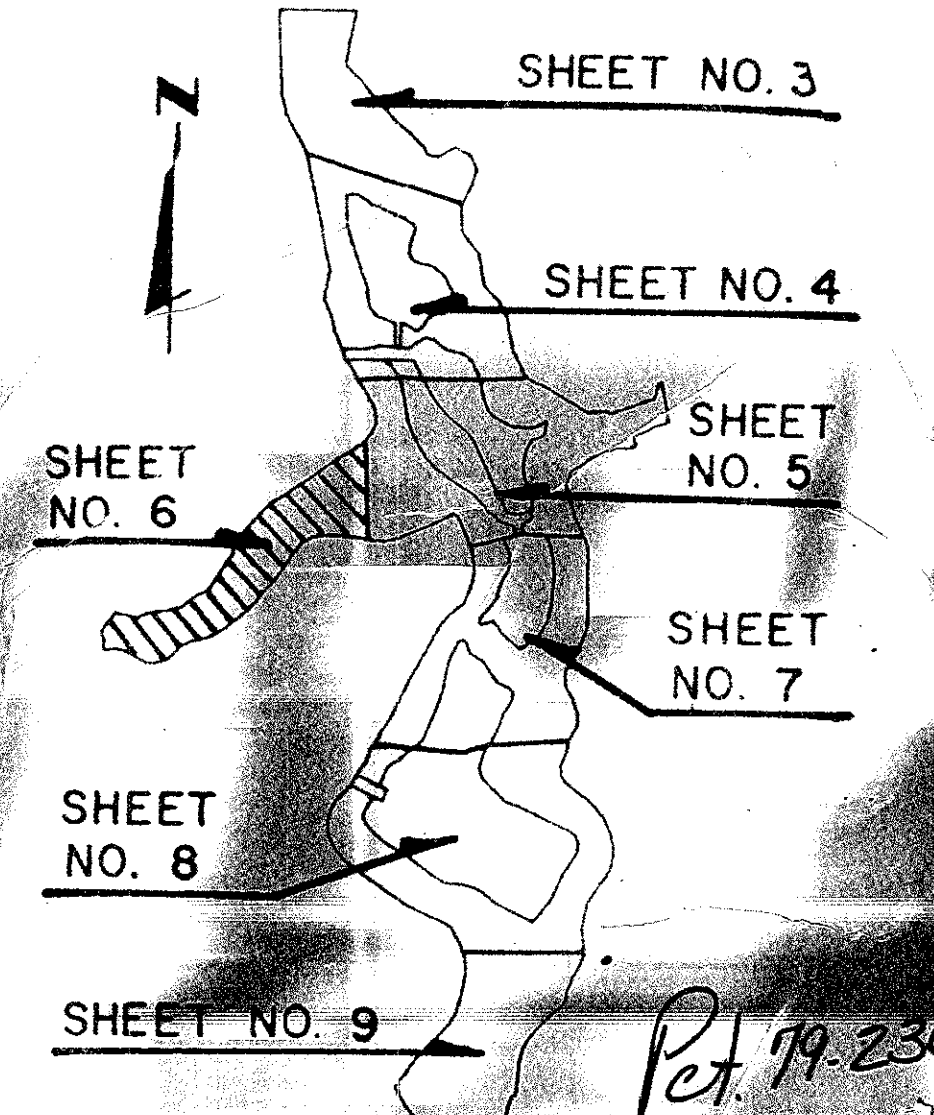
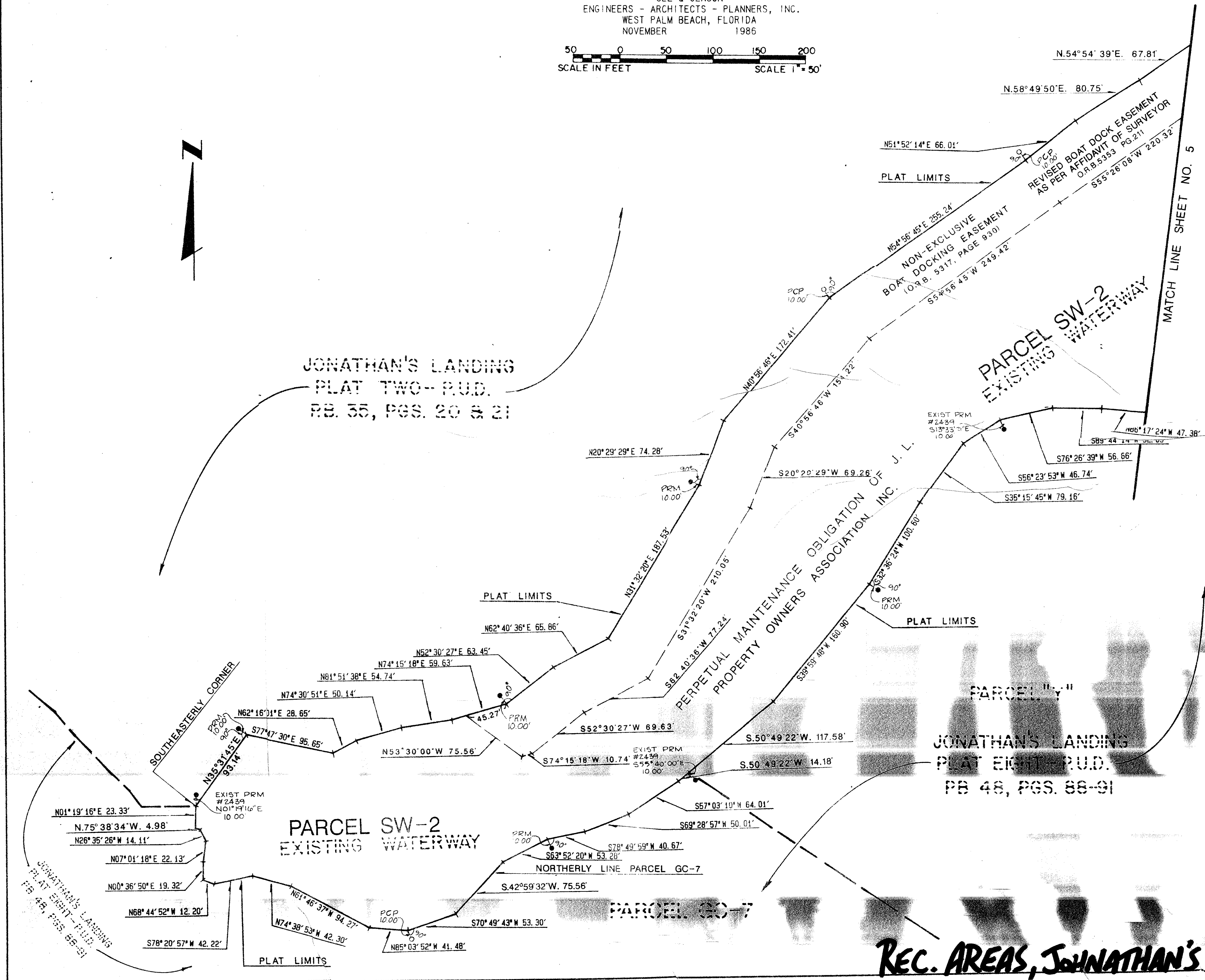
STATE OF FLORIDA  
COUNTY OF PALM BEACH  
This plot was filed for  
record at \_\_\_\_\_ M. this \_\_\_\_\_ day  
of \_\_\_\_\_ 1987, and duly  
recorded in Plat Book No. \_\_\_\_\_  
on Pages \_\_\_\_\_ thru \_\_\_\_\_  
JOHN B. DUNKLE  
Clerk Circuit Court  
By: \_\_\_\_\_ D.C.

TA 45



SUBVISION \*  
 BOOK FLOOD ZONE  
 PAGE 0000  
 FLOOD MAP \*  
 TO RM  
 0000

COMPUTED PAC  
 DRAWN D.L.B.  
 CHECKED JHD  
 COMMENTS  
 APPROVED  
 REVISION



**KEY MAP**  
N.T.S.

0261-003

REC. AREAS, JONATHAN'S LANDING 57/176